

CarriageStone

COTTAGE & HOME DESIGN, LLC

NEWSLETTER #6

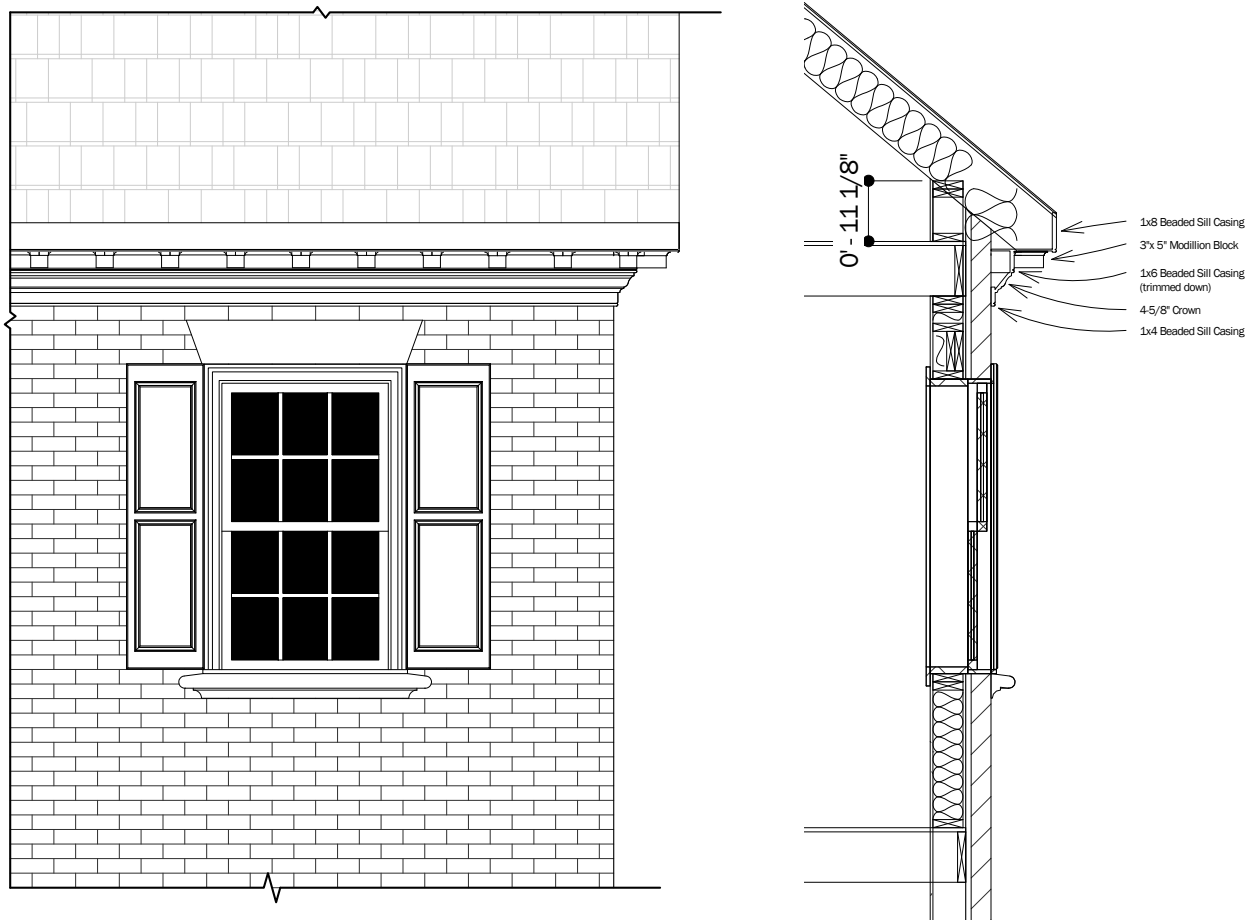
DECEMBER 2008

Good Details Make a Difference

Drive down Monument Avenue, or visit Colonial Williamsburg, and you'll see many examples of well-proportioned, finely built homes. The care and attention to detail in the design and construction of these homes is what sets them apart. One constant that makes these homes distinctive is a well designed cornice.

Achieving a well designed cornice requires more than simply drawing lines on the plans. Careful attention and planning is required prior to framing to achieve the desired results. Detailing the cornice members, including the reveals and dimensions, and establishing the distance desired between the cornice and any features, such as windows or jack arches, is necessary. Good drawings account for this and should provide the correct dimensions where necessary. If a kneewall is required to set the rafters at the proper height, the plans should give the dimension clearly and accurately.

Construction drawings, like any gameplan, should put the people who work with them in the best position to succeed. Overlooking critical details leaves open the possibility that a decision can be made in the field with little regard for the impact further along. What happens if, during framing, the rafter tails are set too low for the cornice to be built as shown on the elevations? It's a simple mistake, made with good intentions, that can be avoided with proper planning and detailed construction drawings. Providing well detailed construction drawings sets the table for a more successful project.



P. O. Box 1805 -- Glen Allen, Virginia 23060 -- TEL: 804-836-8074 -- FAX: 804-308-2180

www.CarriageStone.com

12/3/2008 11:00:16 AM