

CarriageStone

COTTAGE & HOME DESIGN, LLC

Residential Design and Drafting for New Construction, Renovations, & Additions

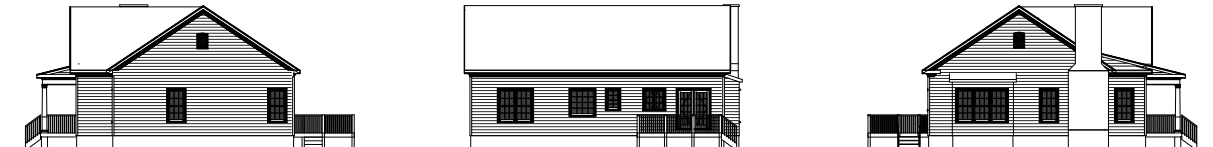
the TUPELO

Plan No. 2009.097

"Whether it's for newlyweds or empty-nesters, The Tupelo provides comfortable living in a very appealing package. With three bedrooms and an open floor plan, this cozy cottage lives large in an economical package."



Copyright 2009 CarriageStone Cottage & Home Design, LLC.
All Rights Reserved



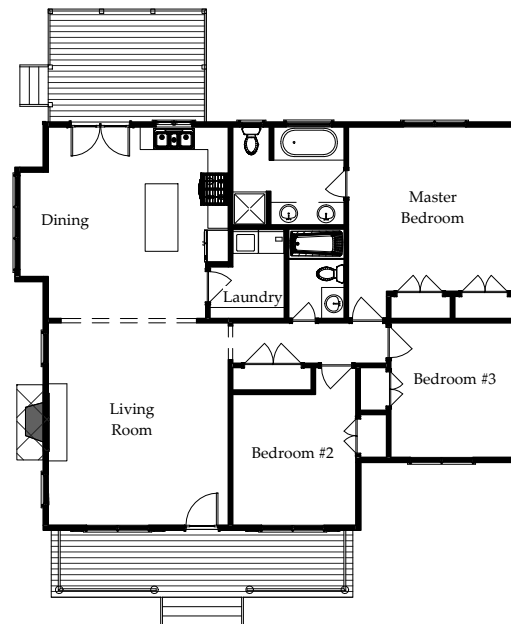
Finished Space:

Living Room	16'-0" x 18'-0"
Kitchen	10'-0" x 17'-0"
Dining Area	8'-6" x 17'-0"
Master Bedroom	14'-9" x 14'-7"
Bedroom #2	11'-0" x 11'-7"
Bedroom #3	11'-0" x 12'-0"

Total Finished Sq.Ft. 1,153 Sq.Ft.

Footprint: 44'-0" x 42'-0"

Ceiling Height: 9'



P. O. Box 1805 -- Glen Allen, Virginia 23060 -- TEL: 804-836-8074 -- FAX: 804-308-2180

www.CarriageStone.com