

# CarriageStone

COTTAGE & HOME DESIGN, LLC

## the SYCAMORE

Plan No. 2008.026

*"Comfortable and practical, with space for a growing family and room to expand during the holidays, the Sycamore will prove itself worthy of years of lasting memories."*

Finished Space:

First Floor	2,182 Sq.Ft.
Dining Room	13'-10" x 15'-1"
Kitchen	11'-9" x 19'-4"
Mud Room	12'-8" x 9'-8"
Pantry	4'-8" x 8'-4"
Informal Dining	10'-0" x 17'-0"
Gathering Room	15'-2" x 19'-8"
Study/Library	10'-7" x 12'-11"
Master Bedroom	15'-0" x 15'-6"
Master Bathroom	9'-11" x 15'-6"
Second Floor	1,536 Sq.Ft.
Master Bedroom #2	15'-4" x 15'-3"
M.B. #2 Sitting Room	16'-3" x 15'-8"
Master Bathroom	10'-0" x 15'-6"
Bedroom #3	11'-2" x 15'-1"
Bedroom #4	11'-2" x 15'-1"
Jack-N-Jill Bath	8'-1" x 8'-6"
Laundry Room	7'-6" x 8'-0"



Total Finished Sq.Ft. 3,718 Sq.Ft.

Unfinished Space:

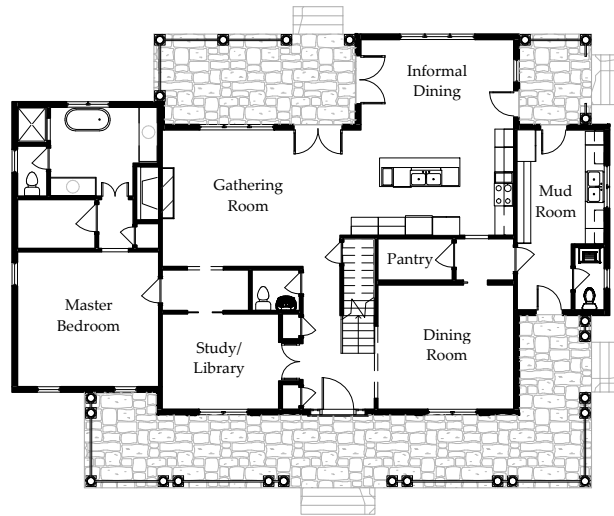
Third Floor 770 Sq.Ft.  
19'-9" x 39'-0"

Footprint:

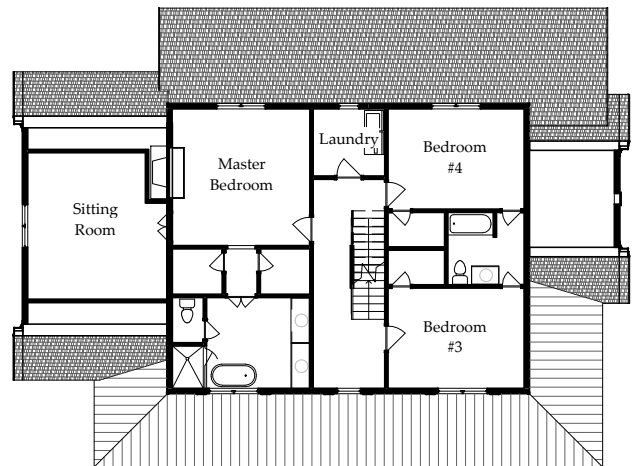
50'-1" x 66'-0"



First Floor Plan



Second Floor Plan



Copyright 2008 CarriageStone Cottage & Home Design, LLC.

P. O. Box 1805 -- Glen Allen, Virginia 23060 -- TEL: 804-836-8074 -- FAX: 804-308-2180

[www.CarriageStone.com](http://www.CarriageStone.com)