

CarriageStone

COTTAGE & HOME DESIGN, LLC

the SWEETGUM

Plan No. 2008.056

Finished Space:

First Floor	1,531 Sq.Ft.
Dining Room	11'-6" x 13'-8"
Kitchen	10'-1" x 13'-4"
Pantry/Laundry	7'-0" x 8'-0"
Informal Dining	11'-7" x 6'-8"
Gathering Room	15'-8" x 14'-4"
Master Bedroom	13'-4" x 14'-4"
Master Bathroom	11'-7" x 10'-4"
Her Closet	5'-6" x 5'-4"
His Closet	4'-0" x 4'-0"
Bedroom #2	13'-4" x 11'-0"
Bathroom	9'-6" x 8'-0"
Second Floor	784 Sq.Ft.
Bedroom #3	14'-6" x 12'-2"
Bathroom #3	5'-0" x 8'-3"
Bedroom #4	14'-6" x 14'-0"
Bathroom #4	5'-0" x 8'-0"
Storage/Mechanical	7'-0" x 12'-0"

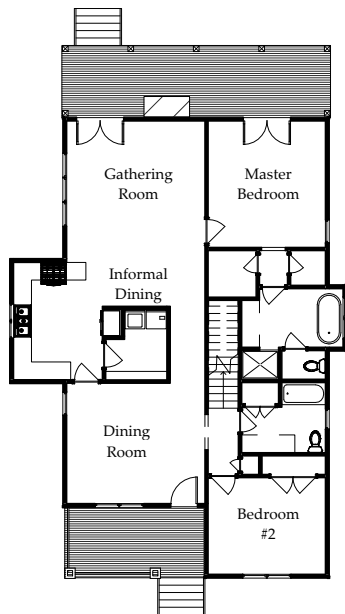
Total Finished Sq.Ft. 2,315 Sq.Ft.

Footprint: 38'-0" x 60'-0"

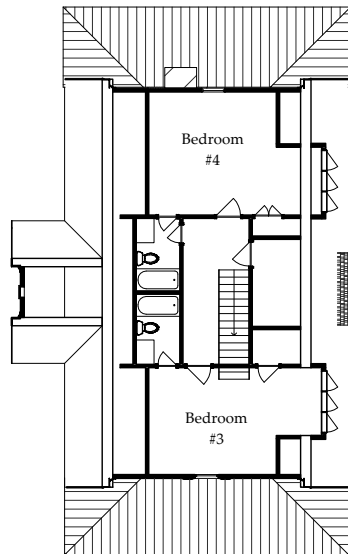
"Combining open and light spaces with a nod toward tradition, relaxed and comfortable come to mind when thinking of this home. With a first floor Master Suite, Guest Bedroom, and two additional Bedrooms on the second floor, the Sweetgum is suited for all stages of life."



First Floor Plan



Second Floor Plan



Copyright 2009 CarriageStone Cottage & Home Design, LLC.

P. O. Box 1805 -- Glen Allen, Virginia 23060 -- TEL: 804-836-8074 -- FAX: 804-308-2180

www.CarriageStone.com