

# CarriageStone

COTTAGE & HOME DESIGN, LLC

## the SILVERBELL

Plan. No. 2008.058

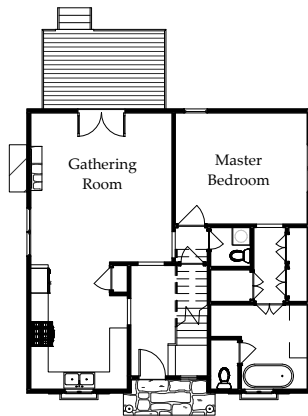
*"A charming and cozy cottage for empty nesters or young couples, the Silverbell offers a first floor Master Suite and two additional bedrooms upstairs."*

### Finished Space:

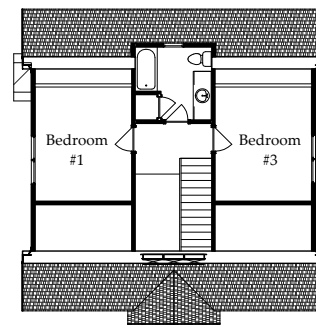
First Floor	1,024 Sq.Ft.
Foyer	5'-2" x 12'-7"
Kitchen	11'-0" x 14'-4"
Gathering Room	16'-0" x 17'-0"
Powder Room	4'-7" x 4'-6"
Master Bedroom	15'-0" x 12'-8"
Master Bathroom	11'-0" x 9'-7"
Second Floor	644 Sq.Ft.
Bedroom #2	11'-0" x 13'-0"
Bathroom	8'-9" x 8'-4"
Bedroom #3	11'-0" x 13'-0"
Total Finished Sq.Ft.	1,668 Sq.Ft.
Footprint:	32'-0" x 32'-0"



First Floor Plan



Second Floor Plan



Copyright 2009 CarriageStone Cottage & Home Design, LLC.

P. O. Box 1805 -- Glen Allen, Virginia 23060 -- TEL: 804-836-8074 -- FAX: 804-308-2180

[www.CarriageStone.com](http://www.CarriageStone.com)