

CarriageStone

COTTAGE & HOME DESIGN, LLC

Residential Design and Drafting for New Construction, Renovations, & Additions

the GEORGE STREET

Plan. No. 2009.081

"The George Street will be an appropriate addition to most any cottage or bungalow. It offers space for two vehicles, including full size SUV's. The walk-up space on the second floor is light and bright with a generous dormer and two additional windows in the gable ends. It provides much needed storage solutions that all families need."

Garage Floor	562 Sq. Ft.
Garage	24'-8" x 22'-8"
Second Floor	354 Sq.Ft.
Unfinished Storage	25'-4" x 14'-0"

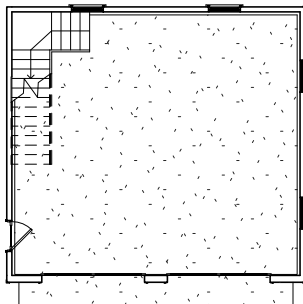
Total Sq.Ft.: 916 Sq.Ft.

Footprint: 26'-0" x 24'-0"

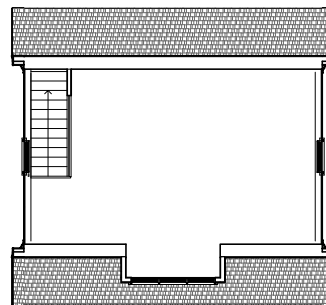


Copyright 2009 CarriageStone Cottage & Home Design, LLC.

Garage Floor Plan



Second Floor Plan



P. O. Box 1805 -- Glen Allen, Virginia 23060 -- TEL: 804-836-8074 -- FAX: 804-308-2180

www.CarriageStone.com

3/18/2009 9:43:01 AM