

# CarriageStone

COTTAGE & HOME DESIGN, LLC

Residential Design and Drafting for New Construction, Renovations, & Additions

## the CHARLES STREET

Plan. No. 2009.082

*"Offering classic design and detailing, the Charles Street will be a welcome addition to most any neighborhood. With space for two vehicles, including full size SUV's, and additional walk-up space on the second floor, it provides shelter from the elements as well as much needed storage solutions necessary to meet the needs of growing families."*

Garage Floor	562 Sq. Ft.
Garage	24'-8" x 22'-8"
Second Floor	354 Sq.Ft.
Unfinished Storage	25'-4" x 14'-0"

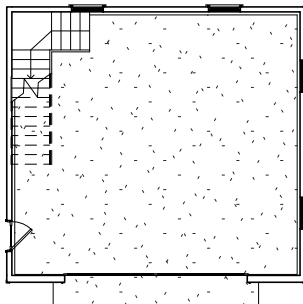
Total Sq.Ft.: 916 Sq.Ft.

Footprint: 26'-0" x 24'-0"

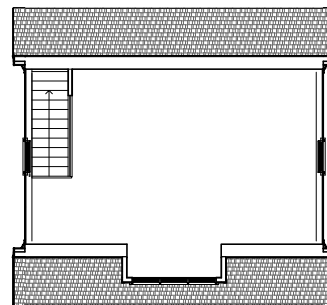


Copyright 2009 CarriageStone Cottage & Home Design, LLC.

Garage Floor Plan



Second Floor Plan



P. O. Box 1805 -- Glen Allen, Virginia 23060 -- TEL: 804-836-8074 -- FAX: 804-308-2180

[www.CarriageStone.com](http://www.CarriageStone.com)