

CarriageStone

COTTAGE & HOME DESIGN, LLC

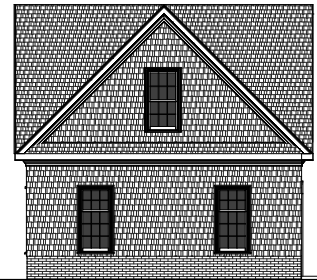
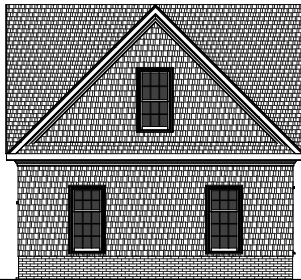
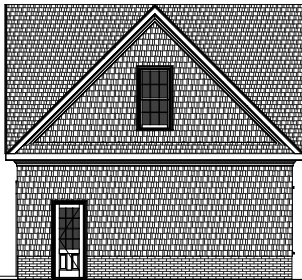
Residential Design and Drafting for New Construction, Renovations, & Additions

the BROMPTON Street

Plan No. 2009.087

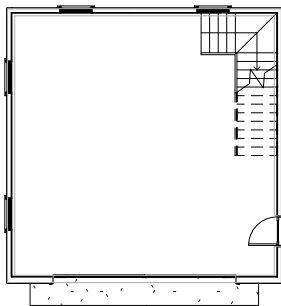
"With handsome cottage styling and details, the Brompton Street will be a welcome addition to many homes. With space for two vehicles, including full size SUV's, and additional walk-up space on the second floor, there is ample space available in this cozy, compact package."

Garage Floor	514 Sq. Ft.
Garage	22'-8" x 22'-8"
Second Floor	416 Sq. Ft.
<u>Total Sq.Ft.:</u>	930 Sq.Ft.
<u>Footprint:</u>	24'-0" x 24'-0"

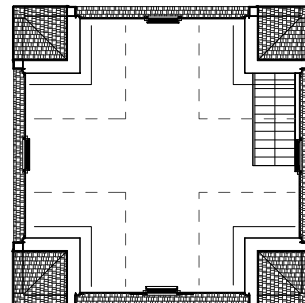


Copyright 2009 CarriageStone Cottage & Home Design, LLC.

Garage Floor Plan



Second Floor Plan



P. O. Box 1805 -- Glen Allen, Virginia 23060 -- TEL: 804-836-8074 -- FAX: 804-308-2180

www.CarriageStone.com

3/18/2009 3:07:36 PM