

# CarriageStone

COTTAGE & HOME DESIGN, LLC

Residential Design and Drafting for New Construction, Renovations, & Additions

## the AMELIA STREET

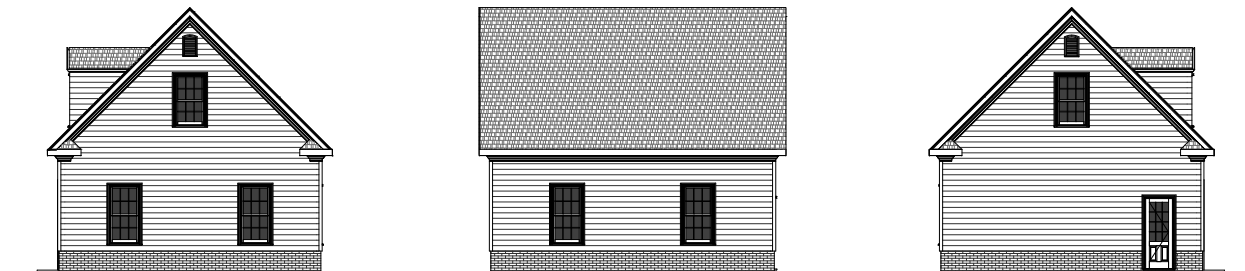
Plan. No. 2009.074

*"With its' classic design and traditional styling, the Amelia Street will be an appropriate addition to most any neighborhood. Offering space for two vehicles, including full size SUV's, and additional walk-up space on the second floor, it offers shelter to the elements as well as much needed storage solutions that all families need."*

Garage Floor	562 Sq. Ft.
Garage	24'-8" x 22'-8"
Second Floor	354 Sq.Ft.
Unfinished Storage	25'-4" x 14'-0"

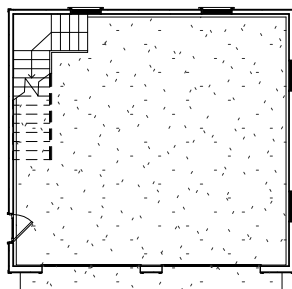
Total Sq.Ft.: 916 Sq.Ft.

Footprint: 26'-0" x 24'-0"

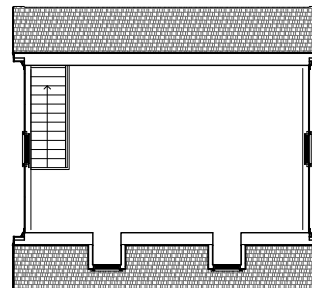


Copyright 2009 CarriageStone Cottage & Home Design, LLC.

Garage Floor Plan



Second Floor Plan



P. O. Box 1805 -- Glen Allen, Virginia 23060 -- TEL: 804-836-8074 -- FAX: 804-308-2180

[www.CarriageStone.com](http://www.CarriageStone.com)

3/12/2009 12:06:15 PM